



# ETHIOPIAN STATISTICAL SERVICE

## Statistical Bulletin

### MONTHLY NEWS RELEASE

### INFLATION REPORT ON MAY, EFY 2017

Issue No. 23/2017

May EFY2017

## Content

- Summary
- Year-on-Year General, Food & Non-food Inflation
- Month-on-Month General, Food & Non-food Inflation
- 12-Month Moving Average General, Food and Non-food Inflation
- Annual Inflation trend
- Glossary

#### 1. Summary

*The Consumer Price Index (CPI), a key economic statistics, is surveyed, analyzed, and made available to data users on a monthly basis.*

*The year-on-year, general inflation rate (**annual percentage change**) in the country stood at **14.4 percent** for the month of May EFY2017. A year earlier (in May EFY2016), the rate was **22.8 percent**.*

*The month-on-month general inflation rate increased by **0.2 percent** for the month of May-EFY2017.*

*It was **0.2 percent** in May EFY2016.*

*General inflation encompasses of two main divisions and twenty-one groups of expenditures. These divisions registered the following price changes during the month of May EFY2017 compared with May EFY2016.*

#### 2. Food & Non-alcoholic Beverages and Non-Food Inflation (Year-on-Year)

The year-on-year inflation and the month-to-month inflation rates helps to gauge the current inflation trajectory, as they capture short-term fluctuations in prices and provides an immediate indicator of inflationary pressures. Particularly, the month-to-month is also crucial for monitoring changes in consumer prices and identifying any sudden spikes or declines in inflation.

##### Food & Non-alcoholic Beverages index

The **year-on-year inflation rate**, also known as the annual inflation rate, measures the percentage change in overall price levels from one year to the same month in the previous year. Accordingly, the year-on-year inflation rate of the Food and Non-alcoholic component of the CPI, for the month of **May** 2017 EFY stood at **12.1%**. This implies that the CPI of Food and Non-Alcoholic Beverages has, on average, increased by **12.1%** compared to May EFY2016. The major contributing factors for the rise of food inflation for May EFY2017 was the observed increase in the average prices of major food commodities such as bread and cereals (**1.3%**), vegetables (**14.5%**), meat (**10.1%**), Sugar, jam, honey & chocolate (**20.3%**), Milk, Cheese and Eggs (**10.0%**), Oils and Fats (**26.7%**), **Fruit (14.2%)**, and Food products n.e.c (**20.2%**).

Tele: +251 111 568464  
+251 111 564226  
+251 111 115131  
Fax: +251 111 115470

YOUR RELIABLE DATA SOURCE  
ተቃማኒ የመረጃ ምንጭ

Website: [www.ess.gov.et](http://www.ess.gov.et)  
P.O.Box: 1143



## ETHIOPIAN STATISTICAL SERVICE

### Statistical Bulletin

Issue No. 23/2017

Page 2

Beginning from May-EFY 2016 the magnitude of the inflation rate steadily declined overtime. In May EFY-2017 General inflation was 14.4% as compared to the one observed in May- EFY2016.

Month/Year	General	Food	Non-Food
May EFY2009 - June EFY2010	14.4	13.4	15.9
May EFY 2010 - JuneEFY2011	12.6	13.1	11.9
May EFY2011 - June EFY2012	19.9	23.3	15.9
May EFY2012 - June EFY2013	20.2	23.2	16.4
May EFY2013 - June EFY2014	33.8	40.3	25.2
May EFY2014 - June EFY2015	32.5	31.7	33.9
May EFY2015 - June EFY2016	<b>26.6</b>	<b>28.1</b>	<b>24.3</b>
May-EFY 2016	22.8	25.6	18.8
June	19.9	22.7	15.8
July	18.6	20.6	15.7
August	17.2	18.8	14.7
September	17.5	19.6	14.4
October	16.1	19.2	11.6
November	16.9	18.5	14.5
December	17.0	18.7	14.4
January	15.5	15.8	15.0
February	15.0	14.6	15.6
March	13.5	11.7	16.2
April	14.4	12.2	17.9
<b>May-EFY 2017</b>	<b>14.4</b>	<b>12.1</b>	<b>17.8</b>



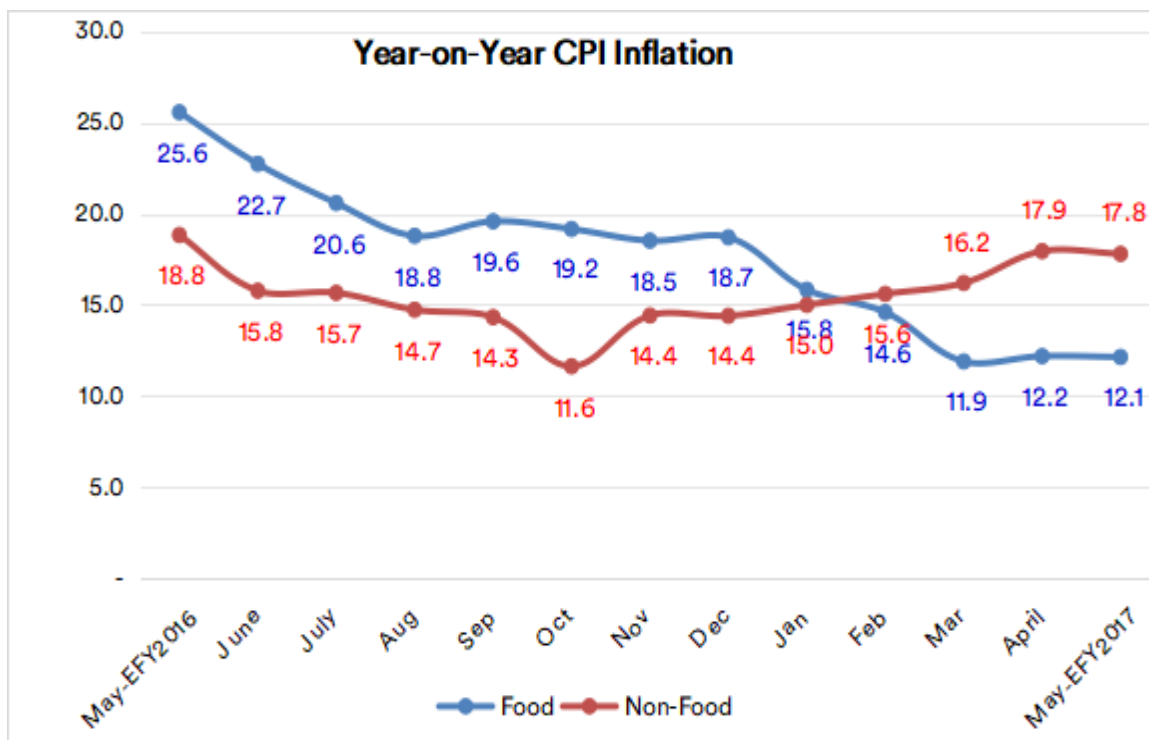
# ETHIOPIAN STATISTICAL SERVICE

## Statistical Bulletin

Issue No. 23/2017

Page 3

Fig 1: Food and Non-Food Inflation (% , Year-on-Year), May EFY2016 - May EFY2017



### Non-Food Inflation and Alcoholic Beverages (Year-on-Year)

As can be seen from the above figure, both the non-food year-on-year inflation rate and Food inflation rate increased in May-ETY2017 as compared to last month. The Non-Food inflation increased by **17.8 percent** during the same period. Particularly, Alcoholic Beverages and Tobacco increased by **(14.7%)**; Housing, water, electricity & other fuel component **(18.8%)**; Furnishings, household equipment & routine maintenance of the House **(14.9%)**; Health **(7.3%)**; Transport **(41.4%)**; Communication **(6.2%)**; Education **(12.6%)**; Restaurants and hotels **(18.3%)** and Miscellaneous goods and services **(19.1%)** have contributed for the rise in non-food inflation rate in May EFY2017.



# ETHIOPIAN STATISTICAL SERVICE

## Statistical Bulletin

Issue No. 23/2017

Page 4

### Major sub divisions in the food and non-food commodities (year-on-Year).

When we look at major division of food and non-food commodities, which holds large share in the commodity basket, the magnitude of Food and Non-alcoholic beverages inflation rate at May EFY2017 showed **12.1%** as compared to the same month in the previous year. From Food and Non-Alcoholic Beverage aspect, the highest weight is hoed by Bread and Cereals, Vegetables, Other-Food products, Non-Alcoholic Beverage, and Meat; whose inflation at May EFY2017 is recorded an increase for Bread & Cereals **(1.3%)**; Vegetables **(14.5%)**; Other-Food products (Food products not elsewhere classified) **(20.2%)**; Meat **(10.1%)** and Non-Alcoholic Beverages & coffee **(47.0%)**.

Similarly, during May 2017 EFY the year-on-year inflation rate of the major Non- Food items of Housing, Water, Electricity, Gas, & Other Fuels **(18.8%)**; Restaurants and Hotels **(18.3%)**; Alcoholic Beverages & Tobacco **(14.7%)**; Furnishings, Household Equipment & Routine Household Maintenance of the House

**Table 2. Major sub divisions in the food and non-food commodities (year-on-Year).**

CPI Items	Items Wight in CPI (%)	% change on Year-on-Year Inflation May EFY2016 compared with May EFY2017	% change in Month-to-Month inflation April EFY2017 compared to May EFY2017
<b>Major Food and Non-Alcoholic Beverage components</b>	<b>53.5</b>	<b>12.1</b>	<b>0.0</b>
Bread and Cereals	17.1	1.3	-1.1
Vegetables	12.3	14.5	0.8
Other-Food products	5.6	20.2	0.9
Non-Alcoholic Beverage	5.1	47.0	0.9
Meat	4.1	10.1	0.6
<b>Major Non-Food Components</b>	<b>46.5</b>	<b>17.8</b>	<b>0.4</b>
Housing, Water, Electricity, Gas and Other Fuels	16.8	18.8	0.7
Clothing and Footwear	5.7	16.3	2.8
Restaurants and Hotels	5.3	18.3	0.0
Alcoholic Beverages and Tobacco	4.9	14.7	-1.3
Furnishings, Household Equipment and Routine	4.7	14.9	0.5

**Tele: +251 111 568464**  
**+251 111 564226**  
**+251 111 115131**  
**Fax: +251 111 115470**

**YOUR RELIABLE DATA SOURCE**  
**ተባማኒ የመረጃ ምንጭ**

**Website: [www.ess.gov.et](http://www.ess.gov.et)**  
**P.O.Box: 1143**



# ETHIOPIAN STATISTICAL SERVICE

## Statistical Bulletin

Issue No. 23/2017

Page 5

### Month-to-Month Inflation Rate

The **month-to-month general inflation rate** for **May EFY2017** has increased by **0.2 percent** compared to what was observed last month. During the same month, the **food and non-alcoholic** component of the inflation remained at **0.0 percent** whereas the **non-food** component for its part increased by **0.4 percent**.

**Table 3: General Inflation Rate (% , Month-to-Month), May EFY2016 - May EFY2017**

Month	General month-to-month inflation
MayEFY 2016	0.5
June	0.9
July	1.5
August	1.2
September	2.4
October	0.9
November	-0.8
December	0.8
January	0.6
February	0.5
March	2.7
April	0.1
May-EFY 2017	0.2

**Month-to-Month Inflation of Food and Non-Food categories:** In May EFY2017, among the food components of the CPI, Meat increased by **(0.6%)**, Fish and sea food increased by **(2.2%)**, Milk, Cheese and Eggs decreased by **(1.8%)**, Oils and Fats increased by **(1.0%)**, Food products n.e.c increased by **(1.0%)**, Non-Alcoholic beverages and coffee increased by **(0.9%)** on the month to month basis.



## ETHIOPIAN STATISTICAL SERVICE

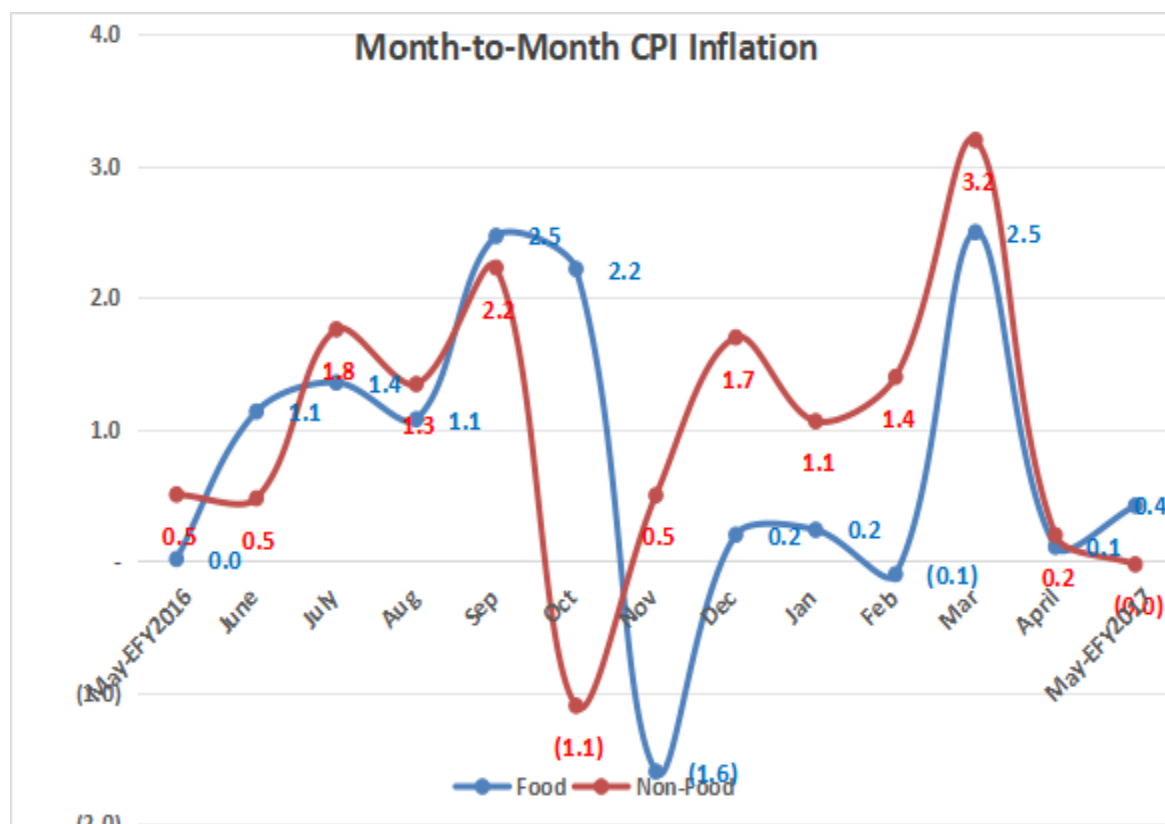
### Statistical Bulletin

Issue No. 23/2017

Page 6

Looking at non-food items, the month-to-month comparison was observed for Alcoholic beverages and tobacco decreased by **(-1.3%)**, Clothing and Footwear surged by **(2.8%)**, Furniture, Furnishing, household equipment and routine maintenance of the house increased by **(0.5%)**, Housing, water, Electricity, gas and other fuels increased by **(0.7%)**, Transport decreased by **(-0.2%)**, Recreation and culture decreased by **(-0.5%)**, and Hotel and Restaurants **(0.0%)**, Health decreased by **(-2.6%)**, Communication increased by **(1.8%)**, and Miscellaneous Goods and Services increased by **(1.3%)** during the month.

Fig 2: Food and Non-Food Inflation (% , Month-to-Month), May EFY2016 - May EFY2017





# ETHIOPIAN STATISTICAL SERVICE

## Statistical Bulletin

Page 7

### 3: 12-Month Moving Average General, Food and Non-food Inflation

The 12-month moving average figures provides a broader perspective on inflation trends over a longer period. As it is indicated in Table below the country level overall inflation rate (annual change based on **12 months Moving Average**) was **16.5 percent** in May EFY2017 as compared to the one observed in a similar period a year ago. Since EFY2016 inflation has been relatively eased in the country.

**Table 4. Overall CPI and 12-month moving average Overall Inflation rate May EEFY2017**

Month	12 Months moving Average Overall CPI	12-Month Moving Average overall Inflation
May-EFY2016	421.1	27.4
June	427.2	26.6
July	433.2	25.6
August	438.9	24.7
September	444.9	23.8
October	450.4	22.6
November	457.4	22.0
December	463.5	21.0
January	469.0	19.9
February	474.4	18.9
March	479.6	17.9
April	484.9	17.1
<b>May-EFY2017</b>	<b>490.3</b>	<b>16.5</b>



# ETHIOPIAN STATISTICAL SERVICE

## Statistical Bulletin

Issue No. 23/2017

Page 8

### 12-month moving average Food and Non-Food Inflation rate (May EFY2016 - May EFY2017)

Dis-aggregated, **12-month moving average food** inflation increased by **17.0 percent** as compared to the one observed a year ago and non-food inflation rate increased by **15.7 percent** in May EFY2017 as compared to the one observed in May EFY2016.

**Table 5: 12-month moving average Food and Non-Food Inflation rate (May EFY2016 - May EFY2017)**

Baseline: Dec, EFY2009= 100

Month	12-month moving average Food Inflation	12-month moving average Non-Food Inflation
May-EFY2016	28.6	25.7
June	28.1	24.3
July	27.5	23.0
August	26.7	21.7
September	26.1	20.4
October	25.1	19.0
November	24.4	18.4
December	23.5	17.5
January	22.1	16.7
February	20.8	16.1
March	19.3	15.7
April	18.1	15.7
May-EFY2017	<b>17.0</b>	<b>15.7</b>





## ETHIOPIAN STATISTICAL SERVICE

### Statistical Bulletin

Issue No. 23/2017

Page 9

#### Recent Improvements in CPI Price survey

The monthly consumer price data collection first started in Addis Ababa in 1963 (1955 E.C). The consumer price survey which started in the capital city helped to prepare Consumer Price Index (CPI) for the city of Addis Ababa which was used as an indicator of national price movement for long time periods. Starting from December 2000 GC CPI coverage expanded to 9 regions and 2 city administrations. Through this approach a number of zones were first selected and in each zone two Woredas were selected. From the 2 Woredas a list of 8 markets were prepared and ranked by size (population), importance of the market, wide variety of goods sold and, use of the market by both urban and rural households. From each zone two urban markets were selected for price data collection. However, these 120 markets selected 25 years ago and become less representative given the fast growth in regional towns and cities in terms of population, economic activities, and the creation of new administrative structures. Furthermore, complaints were raised by stakeholders from time to time that the CPI coverage has been limited to 120 urban markets for a quarter of a century in spite of big structural and economic changes in the country.

This led the Ethiopian Statistics Service to review data collection sample markets that are representative following a consistent approach applied to select the existing 120 markets. This exercise led to the selection of 80 new markets. This makes a total of 200 markets (120 old markets and 80 new markets) for price survey. To see what effect the new market selection could have on the CPI series, Pilot Surveys were conducted in the newly selected 80 markets starting from May 2024. In the subsequent piloting exercises conducted for one year CPI results showed negligible differences between 120 markets and the combined 200 markets.

This exercise was a milestone for the next CPI re-basing which is planned for December 2025=100 using the weights to be derived from 2017EFY National Integrated Household Survey. Furthermore, these 80 new markets are important in order to include the four newly emerged regional states of Sidama, South, South West and Central Ethiopia for the future CPI compilation. Accordingly, the ESS has decided to do the price data collection and CPI production using the combined 200 markets (120 old+80 new) starting from May 2025.



## ETHIOPIAN STATISTICAL SERVICE

### Statistical Bulletin

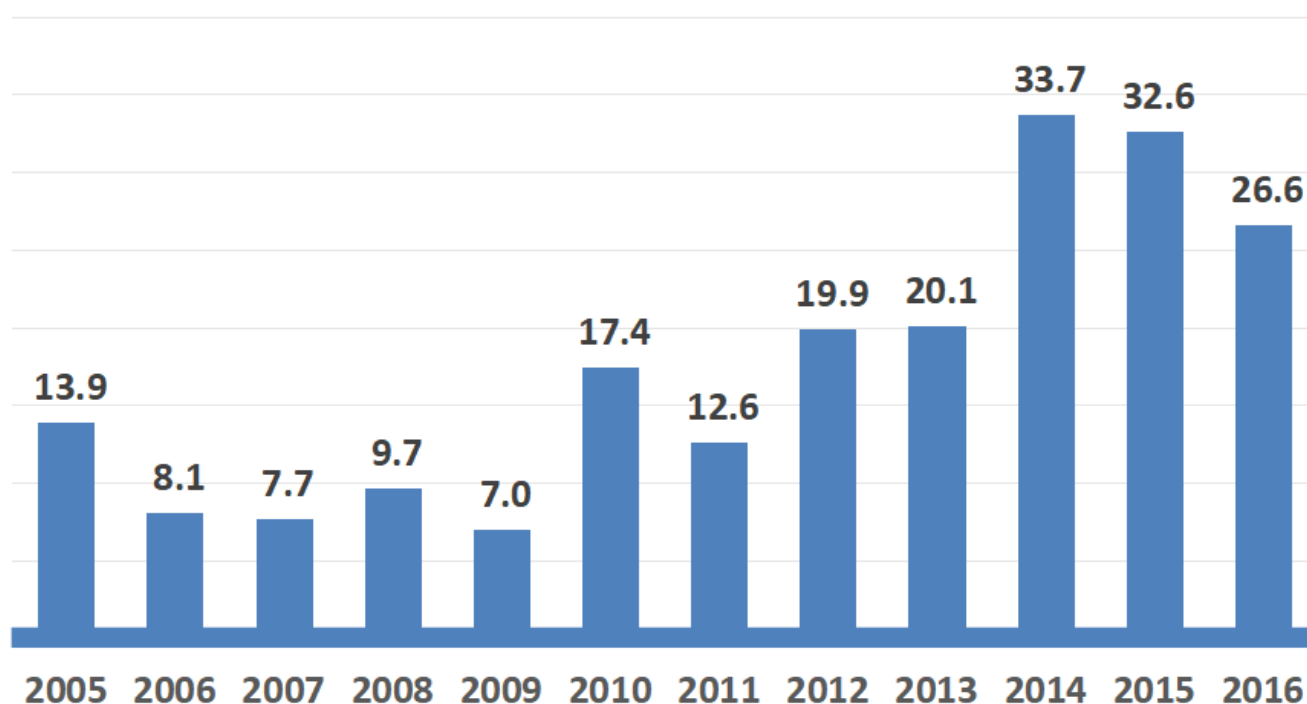
Issue No. 23/2017

Page 10

#### 4. Annual Inflation trend

Relatively low and reduction in inflation rate was observed between 2005 and 2009. Since **EFY2010** inflation rate stick to double digit.

**Fig 3: Average Annual General inflation in Ethiopia since Ethiopian EFY2005 (Year-on-Year)**



The **average annual general inflation rate** for the country stood at **(26.6 %)** in **EFY2016** compared to **(32.6 %)** in **EFY2015**. The past five years are unfavorable for the households, due to high inflation in the country. Specially, in the year EFY2014 and EFY2016, the inflation rate has been over **30 percent** for most months. Internal and external factors forced the inflation to be at higher level; COVID19, internal conflict, and Russia-Ukraine War were the major factors.



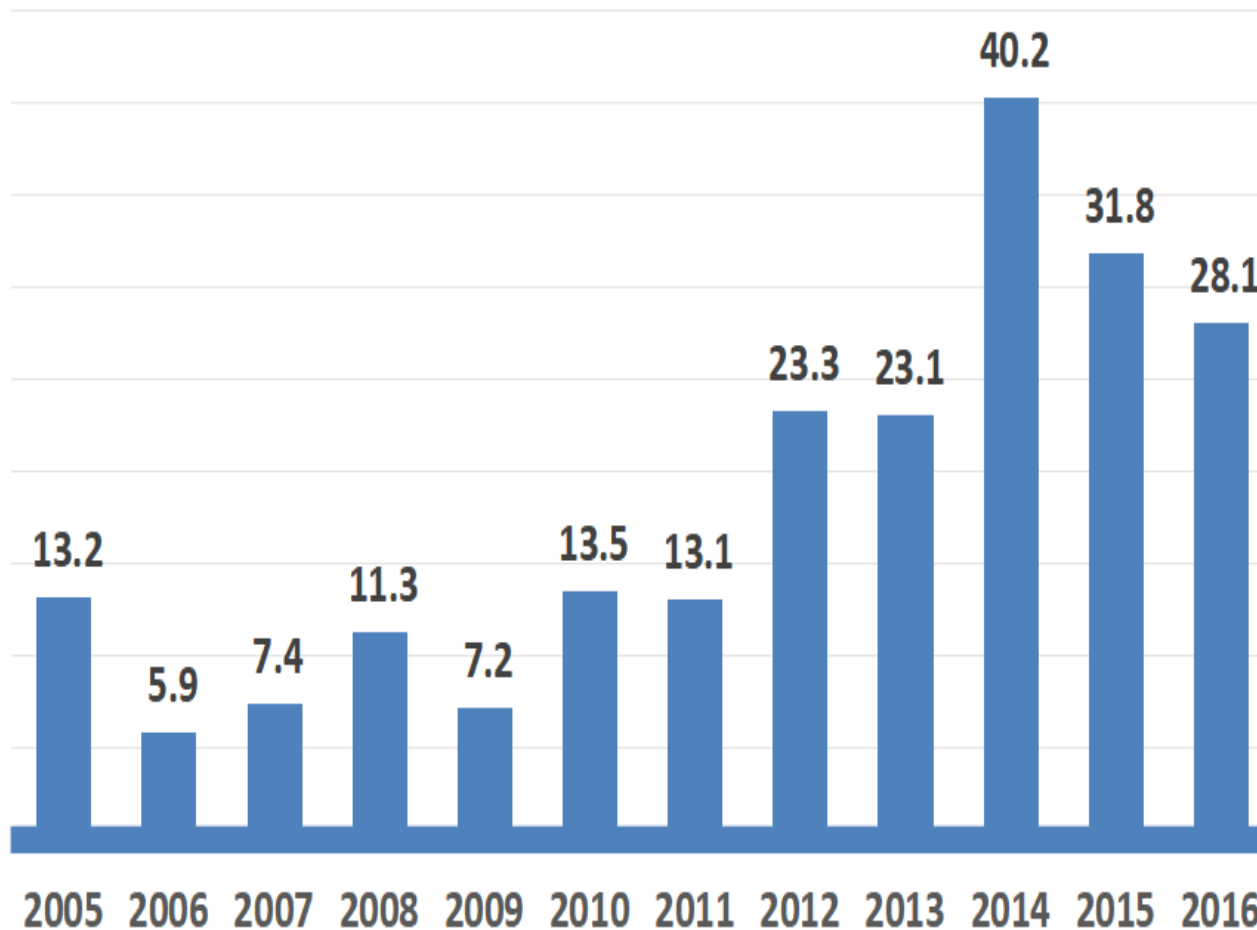
## ETHIOPIAN STATISTICAL SERVICE

### Statistical Bulletin

Issue No. 23/2017

Page 11

Fig 4: Average Annual Food Inflation in Ethiopia since EFY2005 (Year-on-Year)



The **average annual food inflation** rate for the country stood at **(28.1 %)** in **EFY2016** compared to **(31.8 %)** in **EFY2015**, about four percentage point reduction compared to last year figure. But since 2010 the inflation rate stacked at double digit.



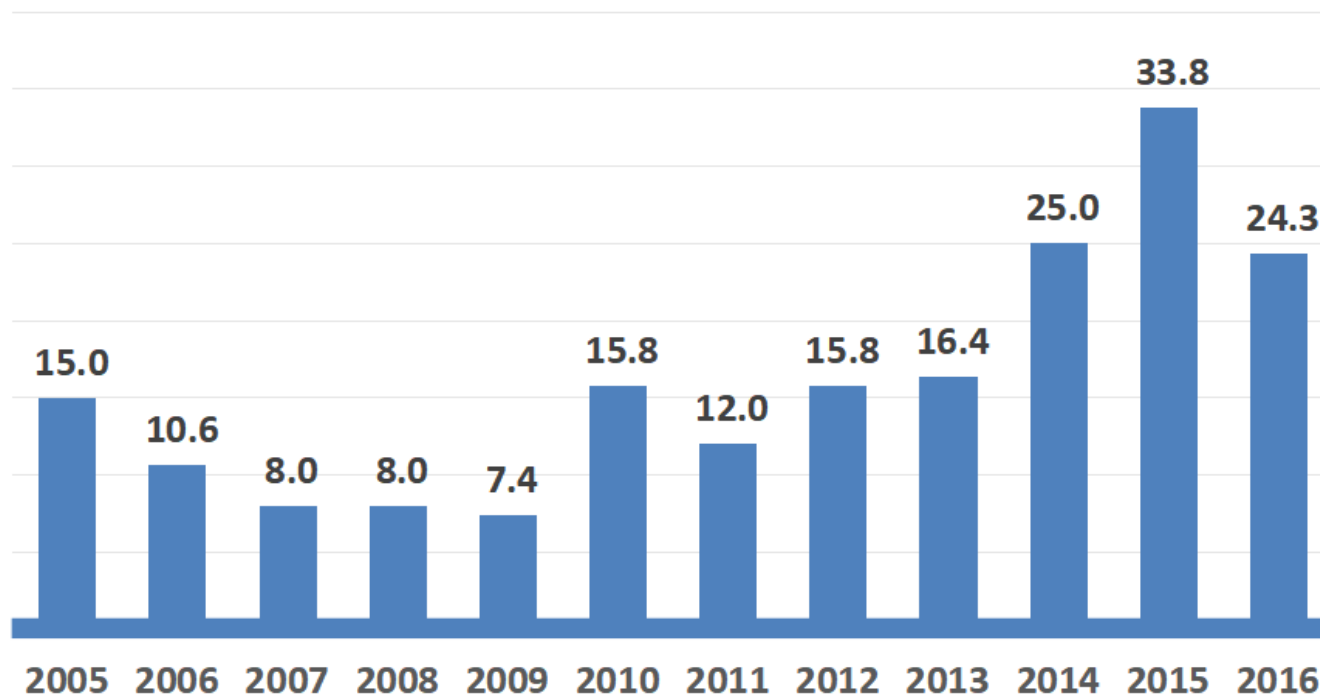
## ETHIOPIAN STATISTICAL SERVICE

### Statistical Bulletin

Issue No. 23/2017

Page 12

Fig 5: Average Annual Non-Food Inflation in Ethiopia since EFY2005 (Year-on-Year)



The average annual non-food inflation rate for the country stood at **(24.3 %)** in **EFY2016** compared to **(33.8 %)** in **EFY2015**. Non-food inflation movement, the past ten year divided into two. Between 2005 and 2009 non-food inflation showed reduction and since then the rate demonstrate increasing trend. This is could be attached to Birr devaluation against USD, Russia-Ukraine War, and increase of international price of gasoline, as most of non-food items are imported or utilize imported raw materials. Relative easing of the non-food inflation for EFY2016 is observed as a result of tight monetary policy in place to reduce bank credit.



## ETHIOPIAN STATISTICAL SERVICE

### Statistical Bulletin

Issue No. 23/2017

Page 13

#### Enquiries

Telephone number  
+251 111 568464

Email: [alemteferig@gmail.com](mailto:alemteferig@gmail.com)  
[alemayehu.teferi@ess.gov.et](mailto:alemayehu.teferi@ess.gov.et)

Postal address : 1143

You can visit us on the Website at:

<http://www.ess.gov.et/>

#### 5. GLOSSARY

- **General Inflation:** The highest level of aggregation of inflation which covers all the items within the scope of the inflation.
- **Food Inflation:** inflation which covers all food items within the scope of the inflation.
- **Non-food Inflation:** inflation which covers all non-food items within the scope of the inflation.
- **Year-on-Year percentage change:** The Yearly percentage change is the change in the index of the relevant month of the current year compared with the index of the same month in the previous year expressed as a percentage.
- **Month-to-Month percentage change:** The monthly percentage change is the change in the index of the relevant month compared with the index of the previous month expressed as a percentage.
- **Index reference period (December EFY2009=100):** The period with which all other periods are compared (the period for which the value of the CPI is set at 100).

Tele: +251 111 568464  
+251 111 564226  
+251 111 115131  
Fax: +251 111 115470

YOUR RELIABLE DATA SOURCE  
ተባማኒ የመረጃ ምንጭ

Website: [www.ess.gov.et](http://www.ess.gov.et)  
P.O.Box: 1143